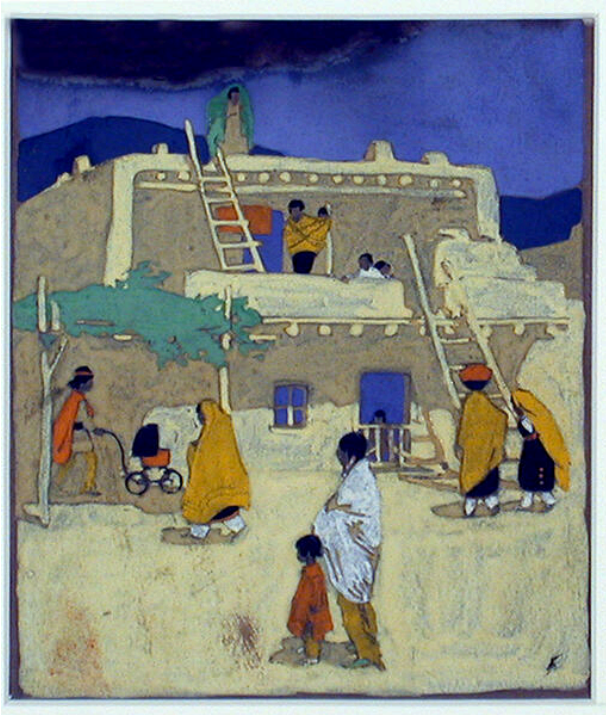


# Basic Detail Report

---



## San (Santo) Domingo Pueblo (study)

### Date

ca. 1920

### Primary Maker

Gustave Baumann

### Medium

tempera on paper

### Description

San Domingo Pueblo in background with Native Americans wrapped in orange and red blankets in foreground and standing on pueblo terraces.

### Dimensions

Image:  $6 \frac{3}{8} \times 5 \frac{1}{2}$  in. ( $16.2 \times 14$  cm) Support:  $8 \frac{11}{16} \times 5 \frac{3}{4}$  in. ( $22.1 \times 14.6$  cm) Mat: 20 x 20 in. (50.8 x 50.8 cm)