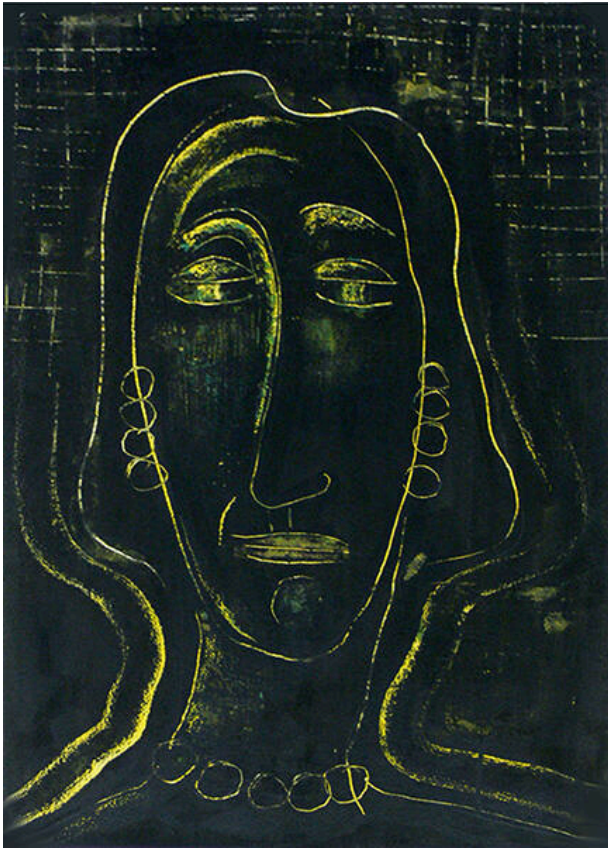


Basic Detail Report



Portrait of E #1

Date

1952

Primary Maker

Cady Wells

Medium

watercolor on paper

Description

Abstract head and shoulder portrait of woman facing viewer on black background. Long oval head outlined in yellow, three

hoops for earrings, round circles for necklace. Upper third of image has yellow checker board pattern in background.

Dimensions

Image: $29 \frac{7}{16} \times 20 \frac{11}{16}$ in. (74.8 × 52.5 cm) Support: $29 \frac{7}{16} \times 20 \frac{11}{16}$ in. (74.8 × 52.5 cm)