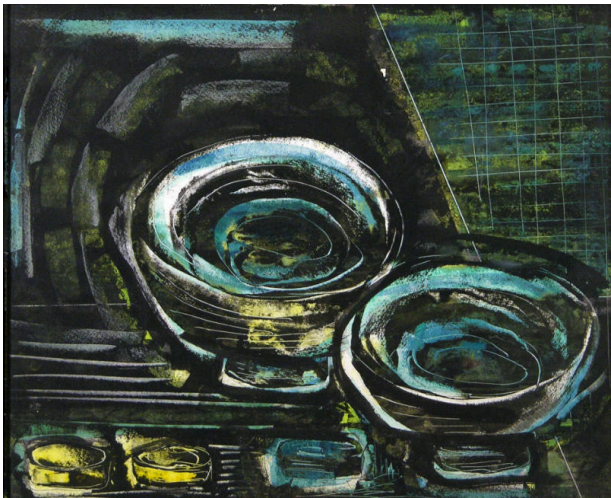


Basic Detail Report



Studio Table

Date

circa 1952

Primary Maker

Cady Wells

Medium

watercolor on paper

Description

Two large bowls with three smaller bowls on a dark background.

Dimensions

Image: 13 1/4 x 16 in. (33.7 x 40.6 cm) Frame: 20 x 22 3/4 x 2 in. (50.8 x 57.8 x 5.1 cm)