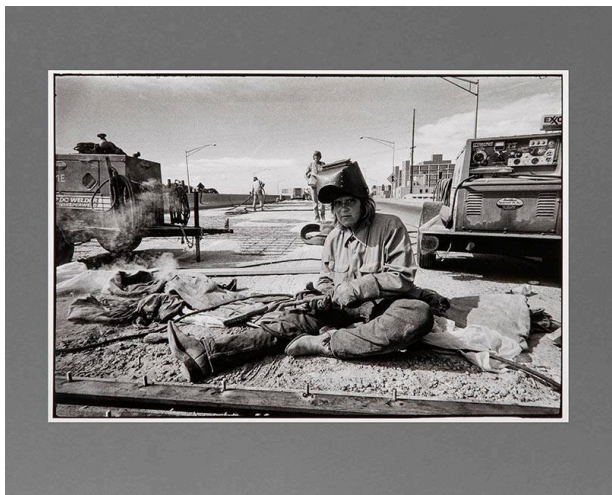


Basic Detail Report



Woman Welder, Coal Blvd. and Interstate

25, Albuquerque, New Mexico

Date

1983

Primary Maker

Miguel A. Gandert

Medium

Chlorobromide print, selenium toned

Description

Woman sitting on ground in the mist of a road construction project. She wears jeans, long sleeve shirt, heavy duty gloves and welding helmet. Road construction equipment at left and right of image. Two fellow workers visible behind woman. Street lights in background.

Dimensions

Image: 12 3/8 × 18 1/2 in. (31.4 × 47 cm) Support: 15 13/16 × 19 7/8 in. (40.2 × 50.5 cm) Mat: 20 × 26 in. (50.8 × 66 cm)