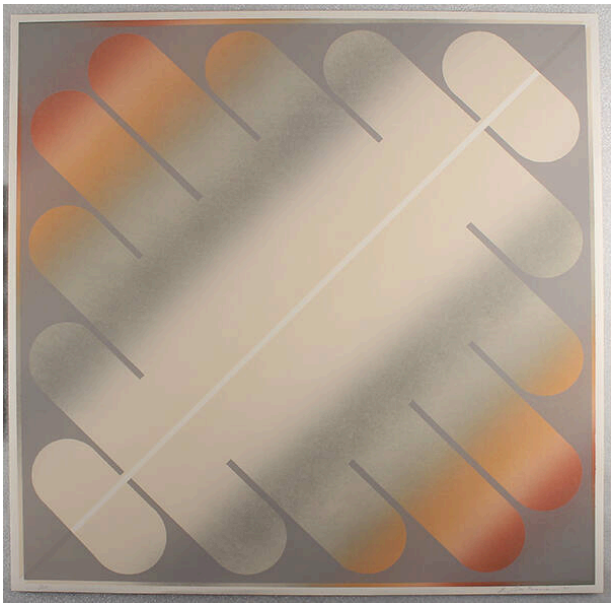


Basic Detail Report



Untitled

Date

1971

Primary Maker

Garos Z. Antreasian

Medium

lithograph

Description

A series of round edged rectangles that have the appearance of a pair splayed hands. The rectangles are connected to form a large flat space of beige at the center. Bisecting the center of the flat area is a single thin, white line. The tips of the central-most rectangles are various shades of orange that gradually darken at the very edges.

Dimensions

Image: 25 × 25 1/16 in. (63.5 × 63.7 cm) Support: 25 13/16 × 25 13/16 in. (65.6 × 65.6 cm)