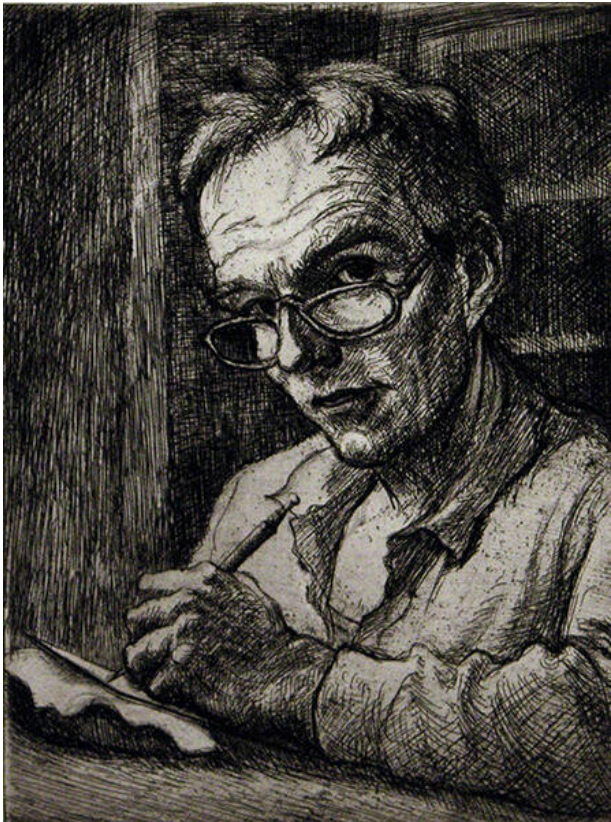


Basic Detail Report



Self-Portrait

Date

1990-1994

Primary Maker

Eli Levin

Medium

etching

Description

Man wearing glasses with head and gaze turned toward viewer, holding an etching needle and plate, bookcases in background.

Dimensions

Image: 7 3/4 x 5 3/4 in. (19.7 x 14.6 cm) Support: 14 3/4 x 11 3/4 in. (37.5 x 29.8 cm)