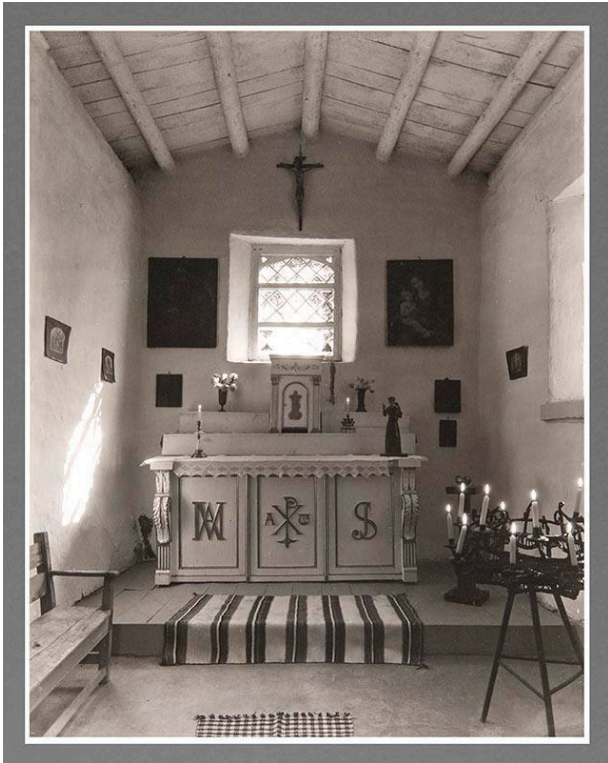


# Basic Detail Report

---



## Bishop's Chapel

### Date

1936

### Primary Maker

Laura Gilpin

### Medium

Gelatin silver print

### Description

Interior of a chapel with an altar in the center and candelabra

with lit candles to left of image, rugs on the floor and a wooden bench to right of image.

### Dimensions

Image: 13 1/4 x 10 1/4 in. (33.7 x 26 cm) Support: 20 x 16 in. (50.8 x 40.6 cm) Mat: 20 x 16 in. (50.8 x 40.6 cm)