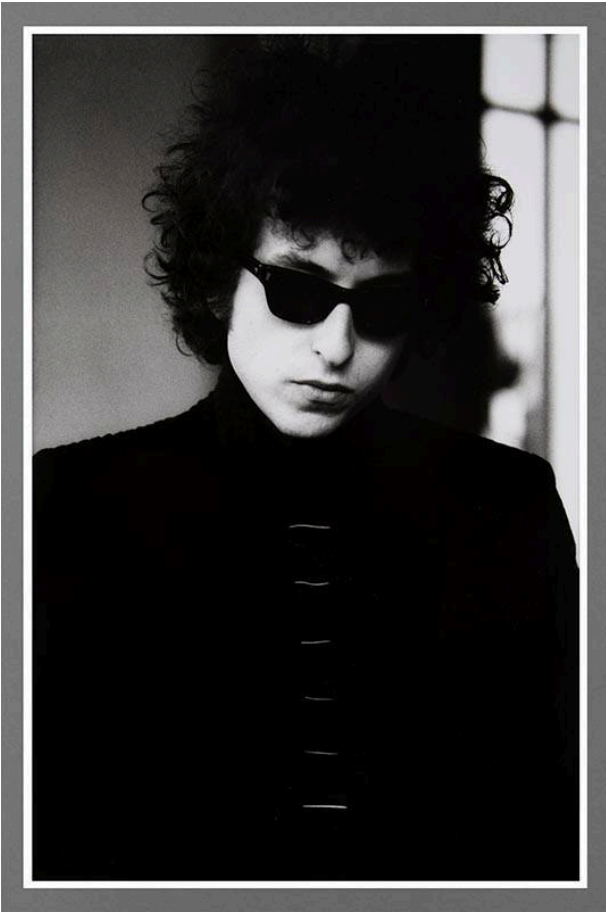


Basic Detail Report



Bob Dylan, The Castle

Date

1966 (printed 1997)

Primary Maker

Lisa Law

Medium

Gelatin silver print

Description

Bob Dylan wearing dark turtleneck shirt and sunglasses, black curly hair. Above his left shoulder is shadow of window.

Dimensions

Image: 17 7/8 × 11 3/4 in. (45.4 × 29.8 cm) Support: 20 × 16 in. (50.8 × 40.6 cm) Mat: 24 × 18 in. (61 × 45.7 cm)