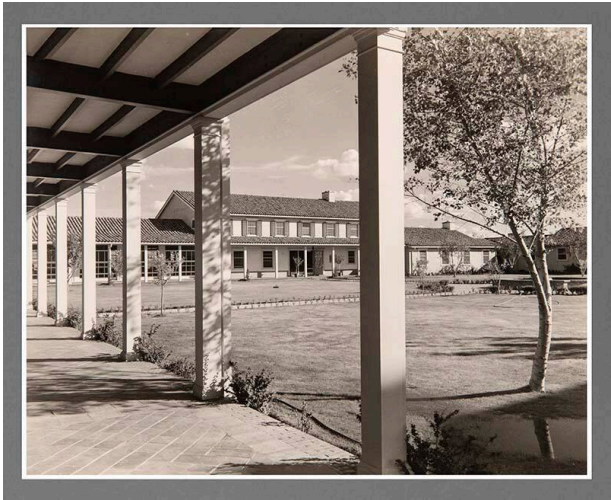


# Basic Detail Report

---



## Sandia Preparatory School

**Date**

1936-1941

**Primary Maker**

Laura Gilpin

**Medium**

gelatin silver print

**Description**

View of Sandia School front building, courtyard with aspen trees in center, portal to left of image in foreground.

**Dimensions**

Image: 7 1/2 × 9 1/2 in. (19.1 × 24.1 cm) Mat: 14 × 17 in. (35.6 × 43.2 cm)