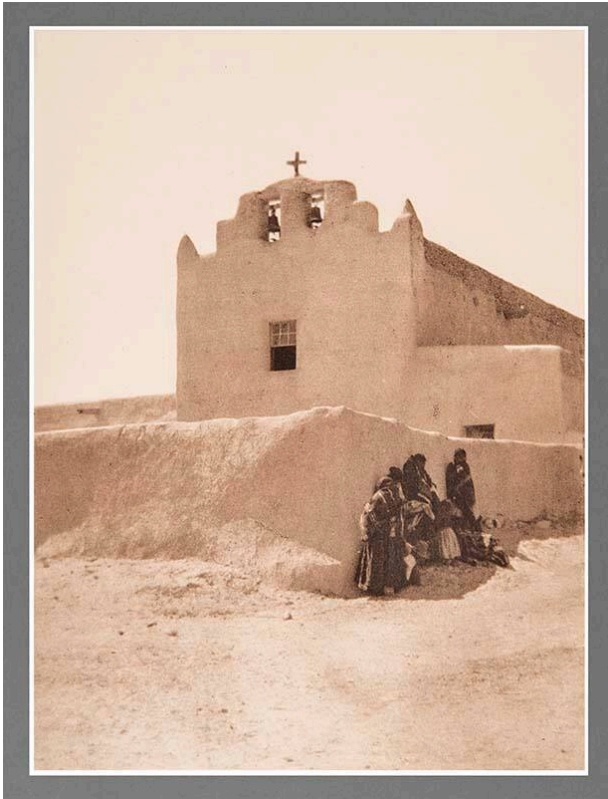


# Basic Detail Report

---



## The Church at Laguna

### Date

1930

### Primary Maker

Laura Gilpin

### Medium

photogravure

### Description

Adobe church with window in mid center; church has 2 bells

enclosed in separate square openings and a cross on very top of structure. Adobe wall surrounds church. At right side of wall a group of Native Americans clustered in shade of wall.

### Dimensions

Image: 8 × 6 in. (20.3 × 15.2 cm) Support (1): 11 1/2 × 8 1/2 in. (29.2 × 21.6 cm) Support (2): 18 × 14 in. (45.7 × 35.6 cm) Mat: 18 × 14 in. (45.7 × 35.6 cm)