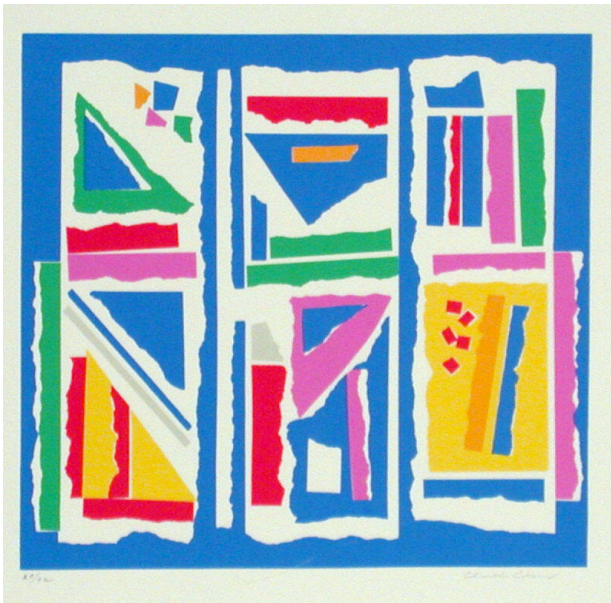


# Basic Detail Report

---



## Celebration

**Date**

April 25 - June 9, 1988

**Primary Maker**

Clinton Adams

**Medium**

Lithograph

**Description**

Abstract architectural form outlined in blue with yellow, pinks, green, red and white in center with blue geometric designs.

**Dimensions**

Image: 8 1/2 x 9 in. (21.6 x 22.9 cm) Support: 18 x 14 in. (45.7 x 35.6 cm)