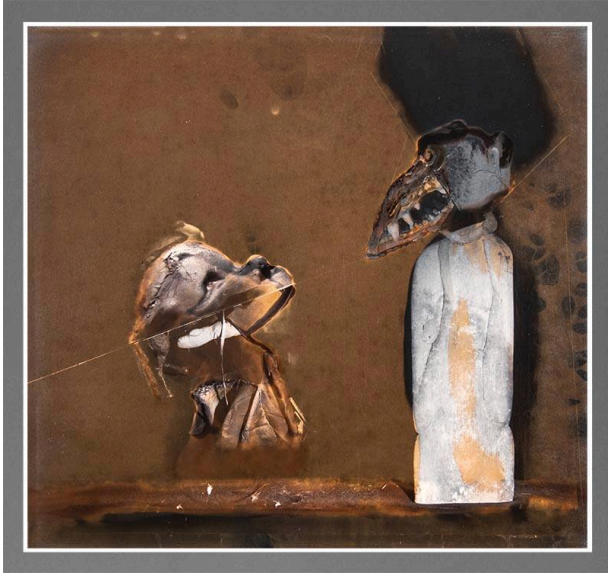


# Basic Detail Report

---



## Santa and Gator

### Date

1996

### Primary Maker

Ted Kuykendall

### Medium

Gelatin silver print, toned

### Description

Two strange, indistinguishable figures face one another. The one on the left is short and somewhat round, the one on the right has a large jaw and snout with distinctive teeth. The overall work is a muddy color with some drips coming down from the top.

### Dimensions

Image: 10 × 11 1/2 in. (25.4 × 29.2 cm) Support: 20 × 24 in. (50.8 × 61 cm)