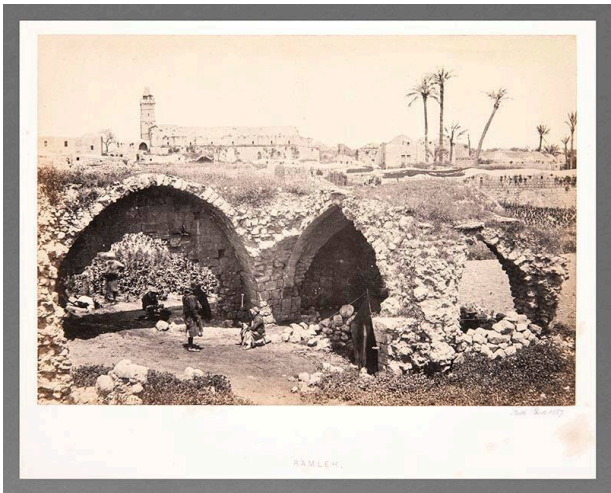


Basic Detail Report



Ramleh

Date

1857

Primary Maker

Francis Frith

Medium

Albumen print

Description

View of vaulted ceiling stone mortuary temples with structures and palms in the distance. Figures can be seen in the foreground under the vaulted ceilings.

Dimensions

Image: 6 1/2 × 9 in. (16.5 × 22.9 cm) Support: 11 1/2 × 17 in. (29.2 × 43.2 cm) Mat: 12 1/2 × 17 1/2 in. (31.8 × 44.5 cm)