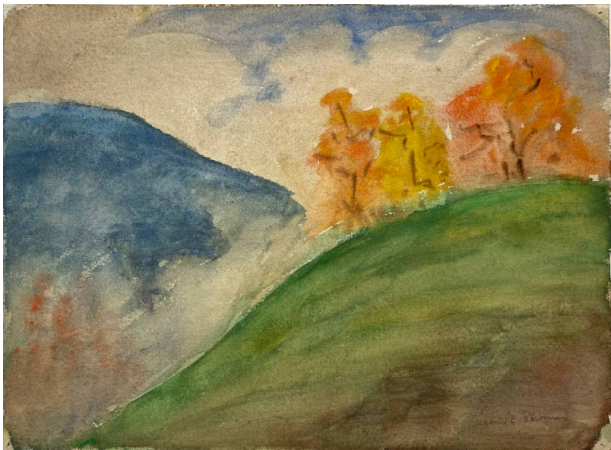


Basic Detail Report



Untitled (Hillside with Trees in Fall Colors)

Date

early 20th Century

Primary Maker

Eugenie F. Shonnard

Medium

watercolor

Description

Landscape of trees on a hill in the fall. In the bottom right portion of the image there is a green hill that fades to brown in the lower right corner. On top of this hill there are some trees that have orange and yellow leaves. In the lower left corner there is a faint impression of red trees, and in the upper left there is a blue mountain.

Dimensions

Image: 11 x 15 in. (27.9 x 38.1 cm)