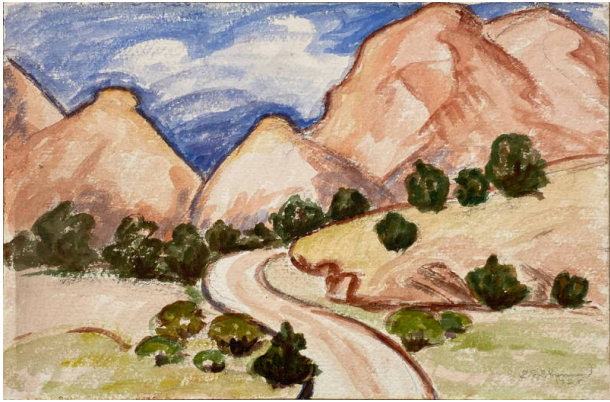


# Basic Detail Report

---



## The Beauty of the (illegible) Colors

**Date**

1925

**Primary Maker**

Eugenie F. Shonnard

### Medium

watercolor on paper

### Description

Matted landscape with peach mountains in the background. The highest peak is on the right and touches the top edge. Light green grass grows in the bottom third. A light brown path outlined in dark brown starts in the middle of the bottom edge, curves to the left then the right and disappears behind a peach and yellow hill in the midground.

The plain and hill are dotted with dark green trees.

### Dimensions

Image:  $9 \frac{3}{16} \times 13 \frac{7}{16}$  in. (23.3  $\times$  34.1 cm) Mat:  $14 \frac{1}{4} \times 18$  in. (36.2  $\times$  45.7 cm)