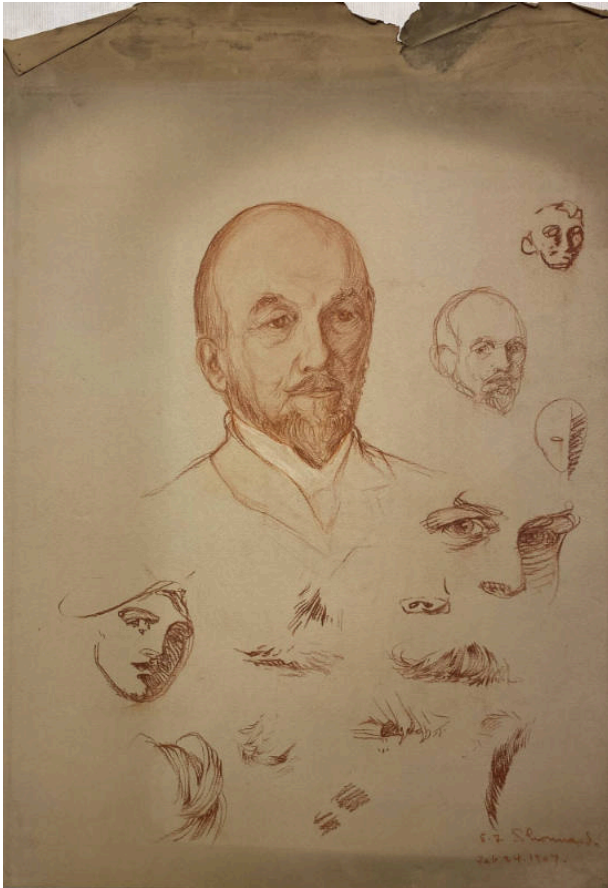


Basic Detail Report



Untitled (Sketches for a portrait of a man)

Date

February 24, 1907

Primary Maker

Eugenie F. Shonnard

Medium

Conte crayon

Description

Sketch for a male portrait with several small study sketches of facial parts (nose, mouth, eyes, hair). Top left is a three-

quarters-view (turned to the viewers right) portrait in red and white of a man's face, neck, and upper shoulders. The subject has a pointed beard, mustache, and lined face. A smaller, rougher sketch of the same face is right beside it on the right, with smaller sketches to the right of and below these.

Dimensions

Image: 21 5/8 x 15 in. (54.9 x 38.1 cm)