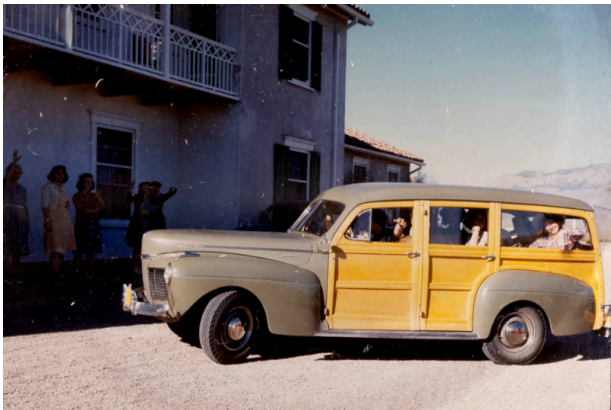


Basic Detail Report



Sandia Preparatory school

Date

1936-1941

Primary Maker

Laura Gilpin

Medium

Eastman Kodak glass lantern slide with red tape edging

Description

Color glass slide of a group of girls loaded up in a brown station wagon with wooden sides. Other girls standing on a portal are waving to them.

Dimensions

Eastman Kodak Lantern Slide Size : 3 1/4 × 4 in. (8.3 × 10.2 cm)