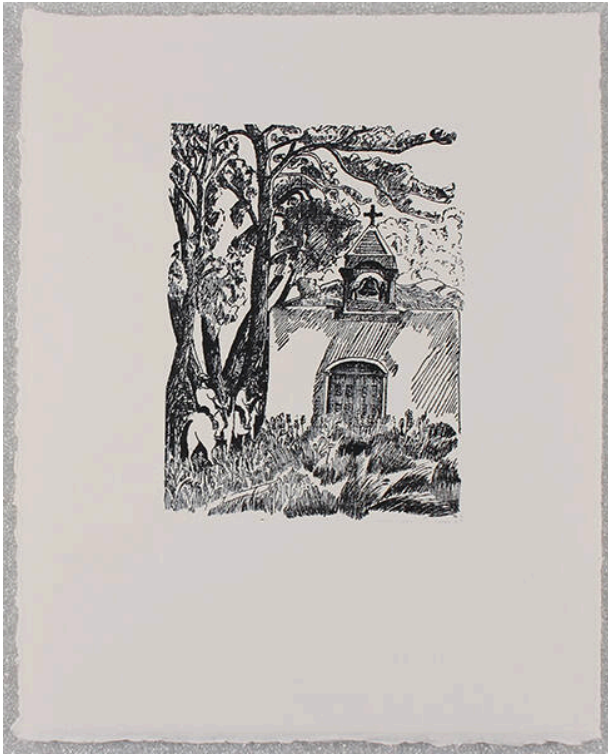


Basic Detail Report



The Placita Oratorio in Summer (from the The HGB Memorial Portfolios)

Date

1950-1989 (printed October, November 1994)

Primary Maker

Helen Greene Blumenschein

Medium

linocut

Description

Two men on horseback ride towards the entrance of a church. The church has a single bell tower and is surrounded by grasses in the front. There is a large tree at the left side of the image.

Dimensions

Image: $5 \frac{7}{16} \times 4$ in. (13.8×10.2 cm) Support: $10 \frac{1}{8} \times 8$ in. (25.7×20.3 cm)