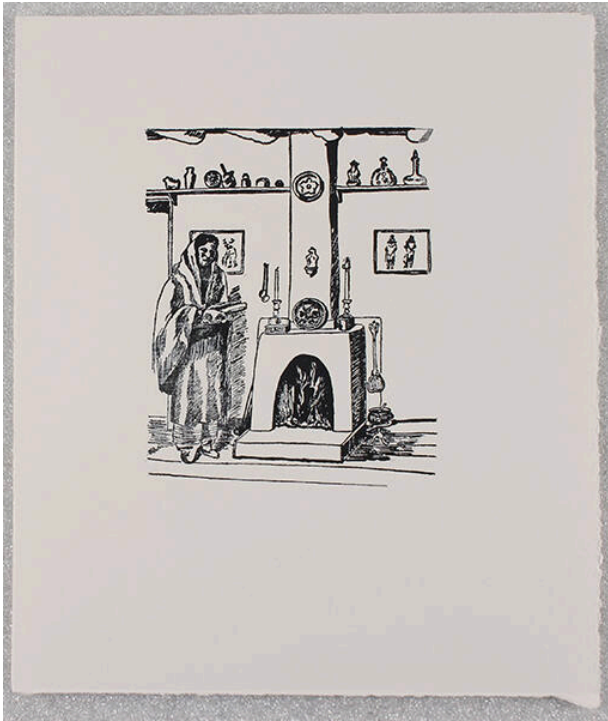


# Basic Detail Report

---



## Popsthlee from Taos Pueblo (from the The HGB Memorial Portfolios)

### Date

1950-1989 (printed October, November 1994)

### Primary Maker

Helen Greene Blumenschein

### Medium

linocut

### Description

An image of an interior scene with an Indian woman standing by a fireplace, she wears a long robe with a head covering. There are numerous objects on the mantle, a shelf above the kiva and pictures on the wall.

### Dimensions

Image:  $5 \frac{3}{16} \times 4$  in. ( $13.2 \times 10.2$  cm) Support:  $10 \frac{1}{4} \times 8 \frac{1}{16}$  in. ( $26 \times 20.5$  cm)