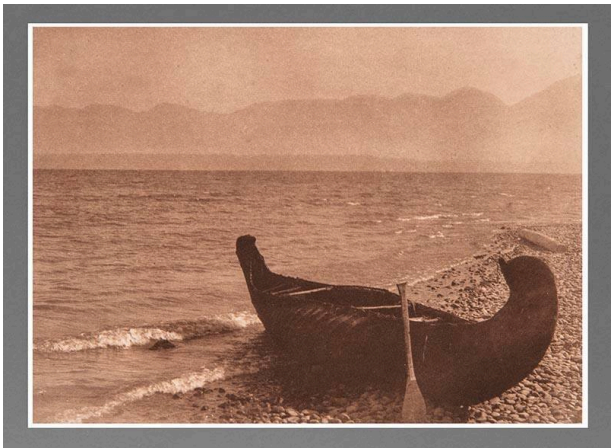


Basic Detail Report



Evening on Flathead Lake

Date

1910 (printed later)

Primary Maker

Edward S. Curtis

Medium

Photogravure on paper

Description

View of lake with horizon line with canoe beached on rocky shore in foreground, one oar propped up against side of canoe

Dimensions

Image: 4 7/8 × 7 1/8 in. (12.4 × 18.1 cm) Plate Mark: 7 13/16 in. (19.8 cm) Support: 9 1/2 × 12 1/2 in. (24.1 × 31.8 cm) Mat: 16 × 16 in. (40.6 × 40.6 cm)