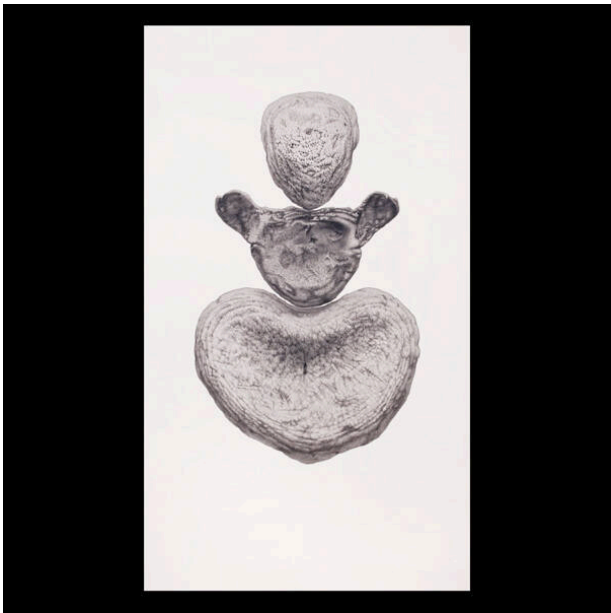


Basic Detail Report



Untitled (from the Wikondiwin series)

Date

1989

Primary Maker

Gendron Jensen

Medium

graphite on paper

Description

Totemic form of white-tailed deer bones float in center of paper.

Dimensions

Support: 71 3/8 x 41 3/4 in. (181.3 x 106 cm) Frame: 72 x 42 1/2 x 2 1/8 in. (182.9 x 108 x 5.4 cm)