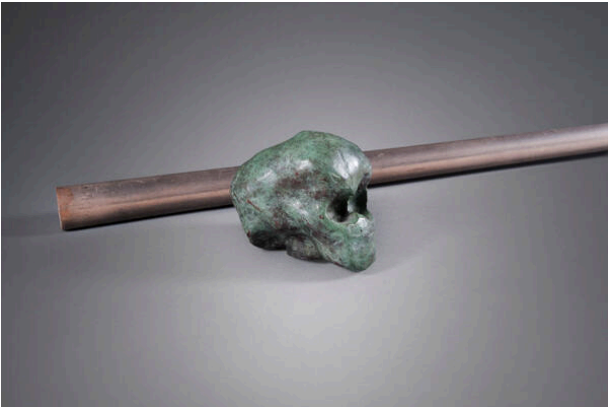


Basic Detail Report



Skull and cane shaft

Date

1987

Primary Maker

Fritz Scholder

Medium

bronze and wood

Description

A small anthropomorphic skull in a deep green patina serves as the grip for a cane. An unpainted wooden cylindrical rod with a tapered end serves as the cane's shaft. The cane grip and shaft are not attached.

Dimensions

A: Cane Grip: 3 11/16 x 2 1/8 x 3 3/8 in. (9.4 x 5.4 x 8.6 cm) B: Cane: 32 9/16 x 15/16 in. (82.7 x 2.4 cm)