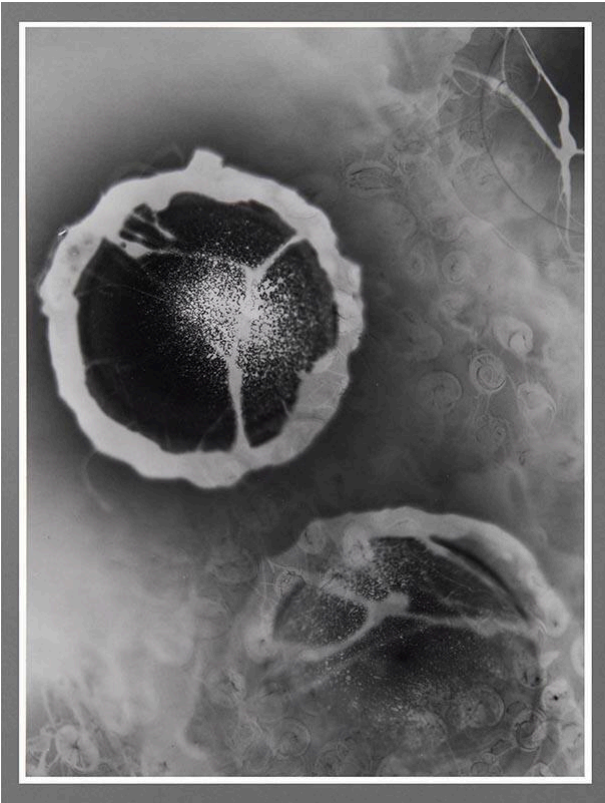


# Basic Detail Report

---



## Shadow #13

### Date

2005-2009

### Primary Maker

Leigh Anne Langwell

### Medium

gelatin silver print

### Description

Abstract composition with prominent circular forms at middle

left and less prominent partial circular shape at lower right.

### Dimensions

Image: 10 × 7 1/2 in. (25.4 × 19.1 cm) Support: 17 × 14 in. (43.2 × 35.6 cm) Mat: 20 × 16 in. (50.8 × 40.6 cm)