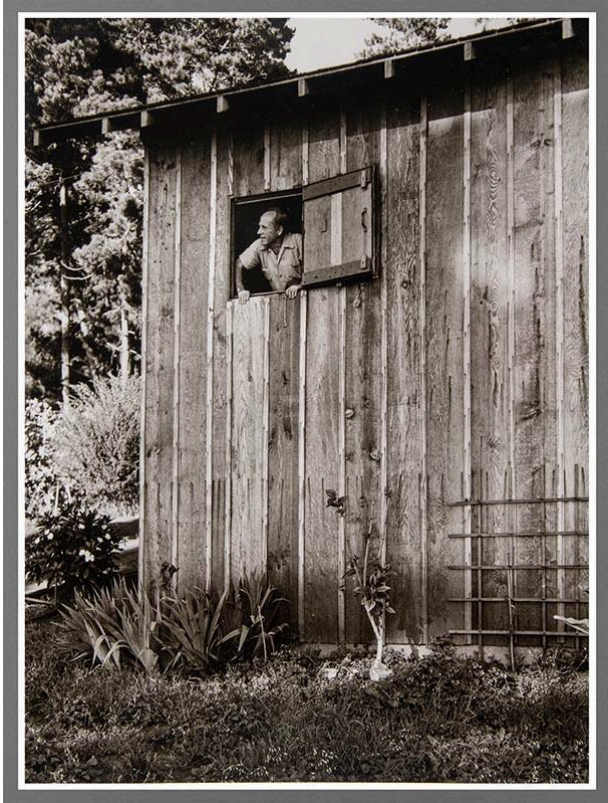


Basic Detail Report



Edward Weston

Date

1940 (printed 1983)

Primary Maker

Beaumont Newhall

Medium

Gelatin silver print

Description

Blocky, rustic wood building dominates the picture with

foreground of iris leaves and vegetation, a climbing plant, and a trellis. In the background are pine trees and other vegetation. At upper left of building, photographer Edward Weston is visible in a square window with a hinged cover /door, with his hands on the sill.

Dimensions

Image: 13 3/8 × 10 1/4 in. (34 × 26 cm) Support: 20 × 16 in. (50.8 × 40.6 cm) Mat: 22 × 18 in. (55.9 × 45.7 cm)