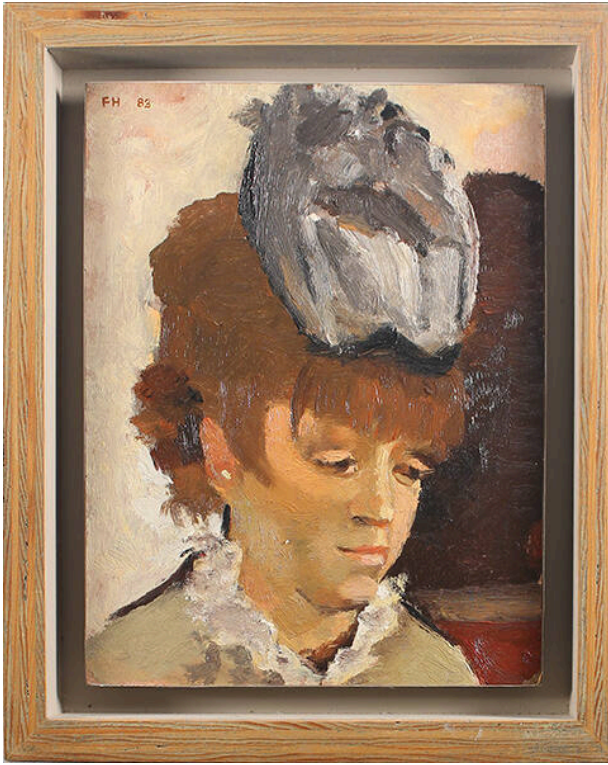


# Basic Detail Report

---



## After l'absinthe

### Date

1983

### Primary Maker

Frederick Hammersley

### Medium

oil on Masonite in artist-made frame

### Description

Head and shoulders portrait of the female subject in Edgar

Degas "L'Absinthe" Subject is wearing a hat, has brown hair and is looking downward and to the viewers right. Her dress has a ruffled collar.

### Dimensions

Image:  $9 \frac{3}{4} \times 7 \frac{3}{8}$  in. (24.8 × 18.7 cm) Support:  $9 \frac{3}{4} \times 7 \frac{3}{8}$  in. (24.8 × 18.7 cm) Frame:  $12 \frac{1}{8} \times 9 \frac{7}{8} \times 1 \frac{1}{4}$  in. (30.8 × 25.1 × 3.2 cm)