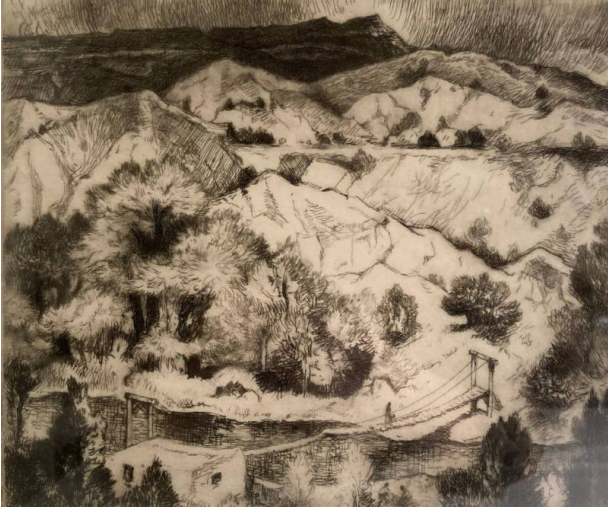


Basic Detail Report



The Rio Grande at Embudo

Date

1973

Primary Maker

Gene Kloss

Medium

Etching on paper, artist's proof

Description

Artist's proof of a southwest New Mexican landscape. Mountain ranges fill the horizons and background with trees along their base. A canyon/river runs along the bottom of the print. A suspended footbridge stretches across the gorge. At one end of the bridge is a small adobe building. A small human form walks across the bridge.

Dimensions

Image: 7 1/2 × 8 7/8 in. (19.1 × 22.5 cm) Support: 8 1/4 × 9 1/2 in. (21 × 24.1 cm) Mat: 13 1/4 × 14 1/8 in. (33.7 × 35.9 cm) Frame: 14 3/8 × 15 1/4 × 1 in. (36.5 × 38.7 × 2.5 cm)