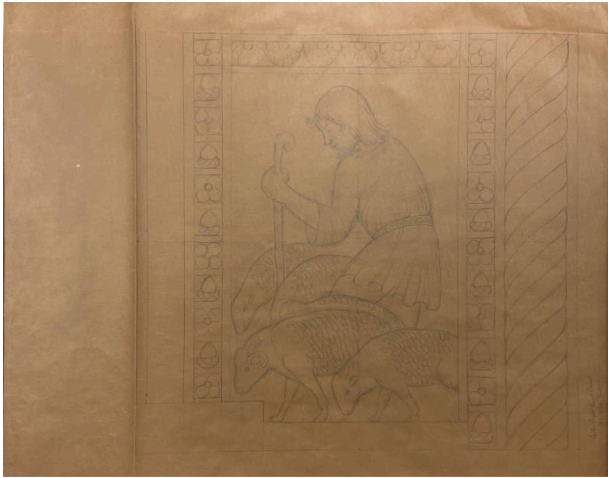


# Basic Detail Report

---



## Plan for Detail of Penrose Reredos (Center Right Hand Panel)

### Date

circa 1943

### Primary Maker

Eugenie F. Shonnard

### Medium

pencil on paper

### Description

Plan for a detail of a proposed reredos commissioned by Julie Penrose for a chapel in Colorado Springs, CO, a design that was never executed in full. The scene contains a shepherd and five sheep, all facing to the left. The left and right edges have an alternating pattern of flowers and acorns. The top edge has a pattern of half-flowers. On the far right is a segment of parallel diagonal lines which curve at the edges like they wrap around a column.

### Dimensions

Image: 36 × 46 3/4 in. (91.4 × 118.7 cm)