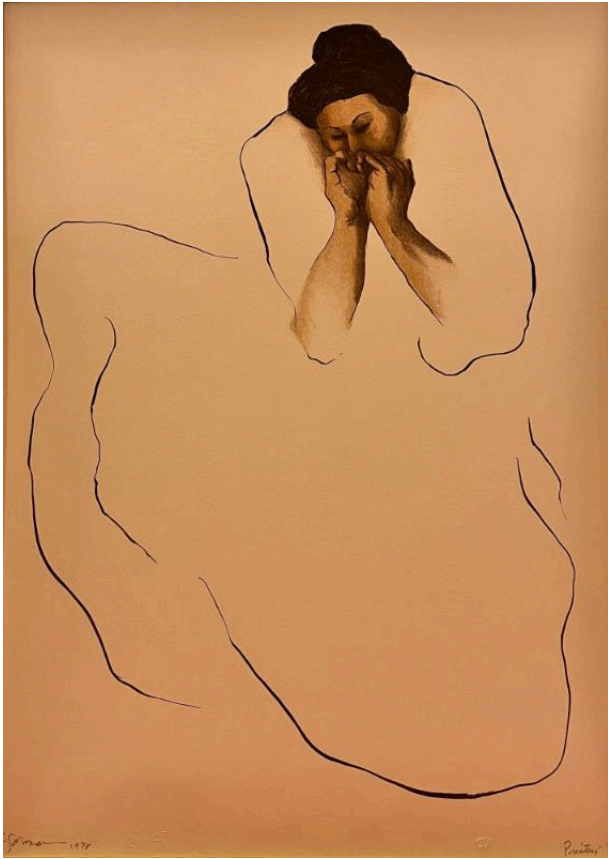


Basic Detail Report



Navajo Pablita II (Printer's Proof)

Date

1978

Primary Maker

R.C. Gorman

Medium

colored lithograph on wove paper

Description

Seated Navajo woman facing viewer, she wears a white dress outlined in black. She has dark hair in a Navajo bun. Arms are

bent at elbow with hands against face. Woman's eyes are cast downward.

Dimensions

Overall: 38 x 30 x 1 in. (96.5 x 76.2 x 2.5 cm) 21-1/2 x 21-3/4 image; 38 x 30 mat