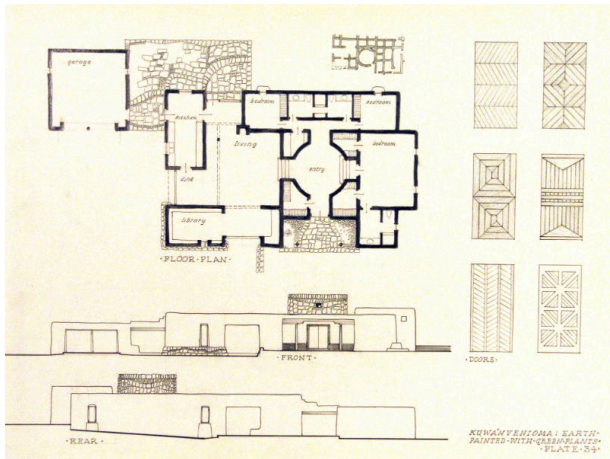


Basic Detail Report



Kuwa'nvenioma: Earth Painted with Green Plants, Plate 34

Date

1965-1967

Primary Maker

William Lumpkins

Medium

Graphite on paper

Description

Architectural drawing of a floor plan of a house with a large circular entryway. Below are front and rear elevations, at the right side are six door panels. At the top center is a small drawing of a schematic of a Pueblo with a central kiva.

Dimensions

Support: 18 x 24 1/8 in. (45.7 x 61.3 cm)