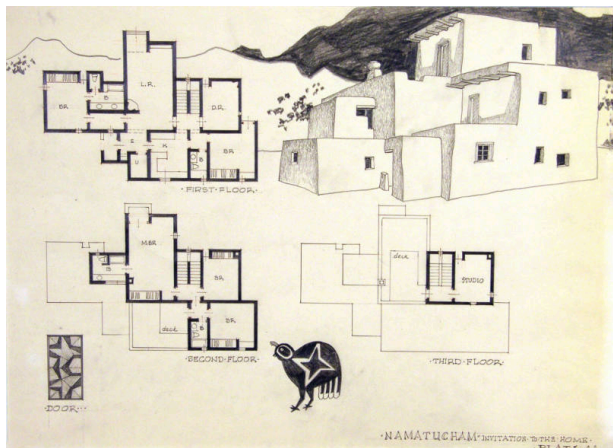


Basic Detail Report



Namatucham: Invitation to the Home, Plate

41

Date

1965-1967

Primary Maker

William Lumpkins

Medium

Graphite on paper

Description

Architectural drawing of the first and second and third floor plan of a home. At upper right is an illustration of the home exterior. At bottom center is a Pueblo style drawing of a quail, at bottom left is a decorative door panel.

Dimensions

Support: 18 x 24 1/8 in. (45.7 x 61.3 cm) Mat: 22 x 28 in. (55.9 x 71.1 cm)