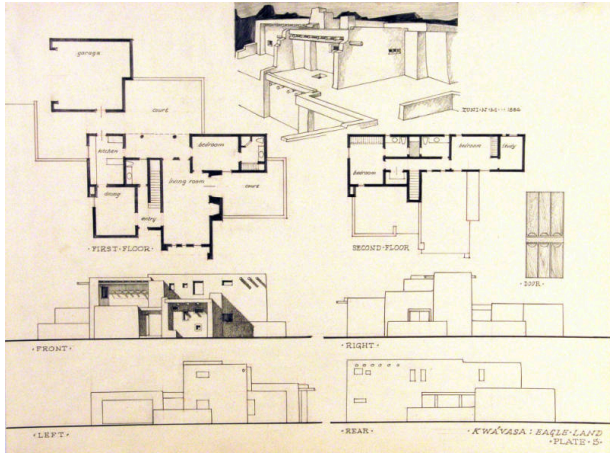


# Basic Detail Report

---



## Kwavasa: Eagle Land, Plate 5

Date

1965-1967

Primary Maker

William Lumpkins

### Medium

Graphite on paper

### Description

Architectural drawing of a first floor, second floor, front and rear of a home. At upper center a drawing of a part of a pueblo home inscribed: Zuni, NM 1886.

### Dimensions

Support: 18 x 24 1/8 in. (45.7 x 61.3 cm)