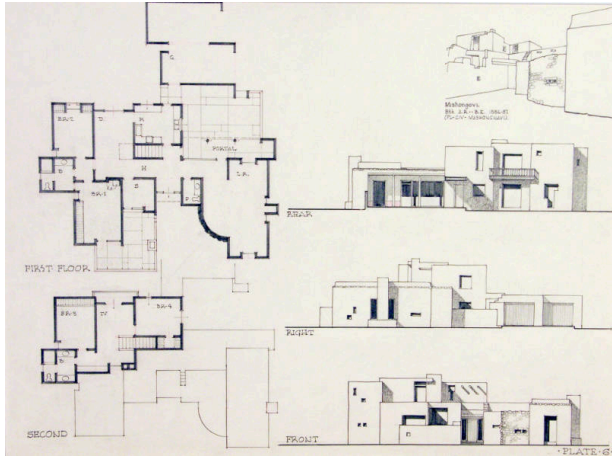


Basic Detail Report



Mishongovi: Plate 6

Date

1965-1967

Primary Maker

William Lumpkins

Medium

Graphite on paper

Description

Architectural drawing of first floor and second floor and front, right and rear elevations of a home. Upper right corner has a drawing of a corner of a pueblo which is inscribed. The various areas of the home are identified.

Dimensions

Support: 18 x 24 1/8 in. (45.7 x 61.3 cm) Mat: 22 x 28 in. (55.9 x 71.1 cm)