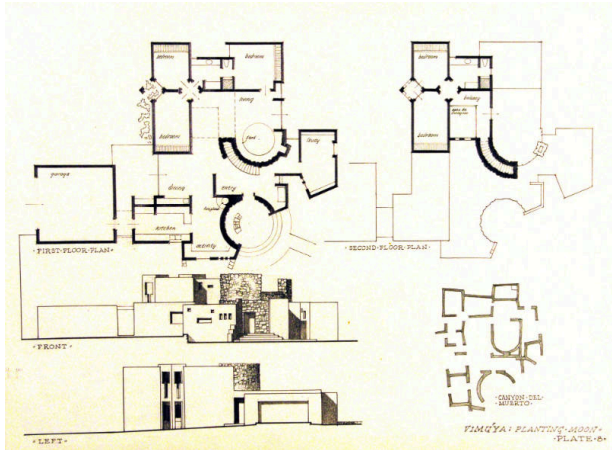


# Basic Detail Report

---



## Vimuya: Planting Moon, Plate 8

Date

1965-1967

Primary Maker

William Lumpkins

### Medium

Graphite on paper

### Description

Architectural drawing of first and second floor plans, front and left elevations of a house. At lower right is a floor plan of pueblo walls at Canyon del Muerto. Various house parts and areas are identified in writing.

### Dimensions

Support: 18 x 24 1/8 in. (45.7 x 61.3 cm)