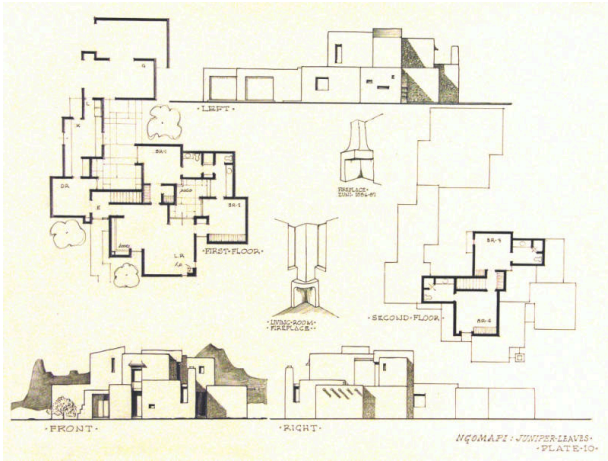


Basic Detail Report



Ngomapi: Juniper Leaves, Plate 10

Date

1965-1967

Primary Maker

William Lumpkins

Medium

Graphite on paper

Description

a) Architectural drawing of the first and second floor plans and the front and right elevations of a house, at center are drawings of two fireplaces; one is inscribed as a fireplace at Zuni 1886-87 b) Drawings of a section of house and a section of the front wall. At upper left is drawing of a Pueblo with a mountain in the background. Bottom right is a scale.

Dimensions

Support (ab): 18 x 24 1/8 in. (45.7 x 61.3 cm)