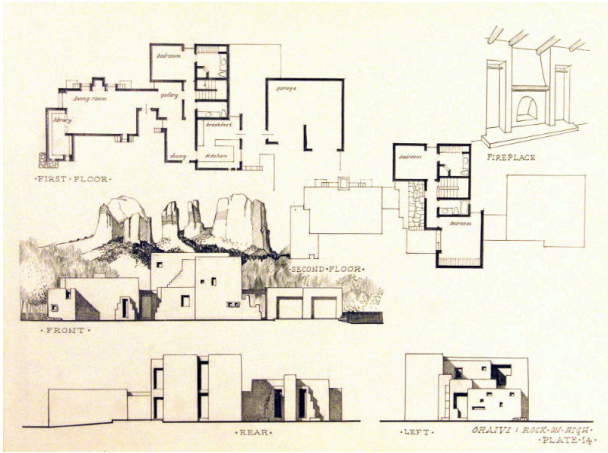


Basic Detail Report



Oraivi: Rock on High, Plate 14

Date

1965-1967

Primary Maker

William Lumpkins

Medium

Graphite on paper

Description

Architectural drawings a) first and second floor plans and front, rear and left elevations, front elevation has large buttes and mesas in the background. An illustration of a fireplace is at the upper right. b) An illustration of a pueblo room interior with vigas and wall illustrations which are geometric with birds, a complex circle and geometric shape are at right bottom.

Dimensions

Support (ab): 18 x 24 1/8 in. (45.7 x 61.3 cm)