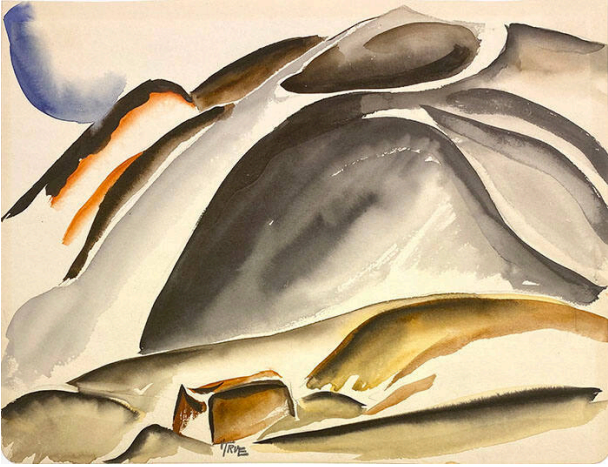


Basic Detail Report



From Gray's Peak

Date

1931

Primary Maker

Virginia True

Medium

watercolor

Description

View of mountains and blue sky with a brown building in the foreground

Dimensions

Support: 8 × 10 1/2 in. (20.3 × 26.7 cm) Mat: 14 × 16 1/4 in. (35.6 × 41.3 cm)