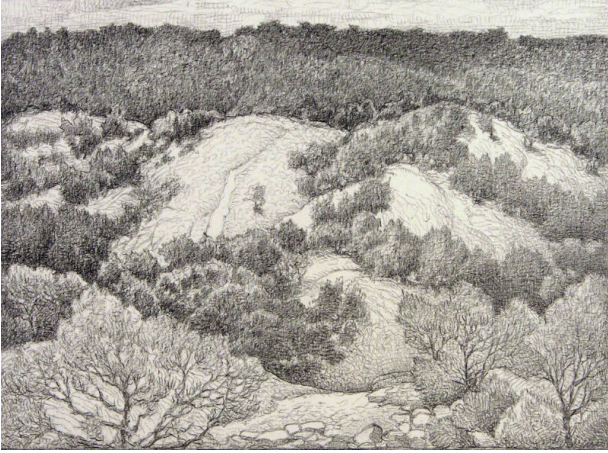


# Basic Detail Report

---



## Pinon Hills Santa Fe

**Date**

1937

**Medium**

Pencil on paper

### Description

Landscape scene of hills and shrubs-mountain scene.

### Dimensions

Image: 6 3/4 x 8 1/2 in. (17.1 x 21.6 cm) Support: 9 3/4 x 13 5/8 in. (24.8 x 34.6 cm)