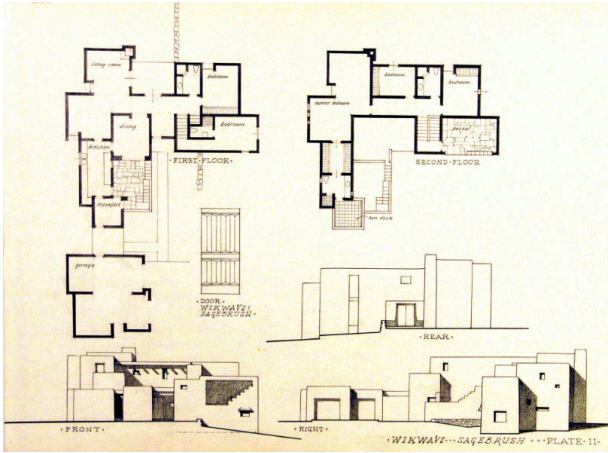


# Basic Detail Report

---



## Wikwavi: Sagebrush, Plate 11

Date

1965-1967

Primary Maker

William Lumpkins

### Medium

Graphite on paper

### Description

Architectural drawing of first and second floor plans and front, right and rear elevations of a house. At center is a small drawing of a door which is inscribed with the title.

### Dimensions

Support: 18 x 24 1/8 in. (45.7 x 61.3 cm)