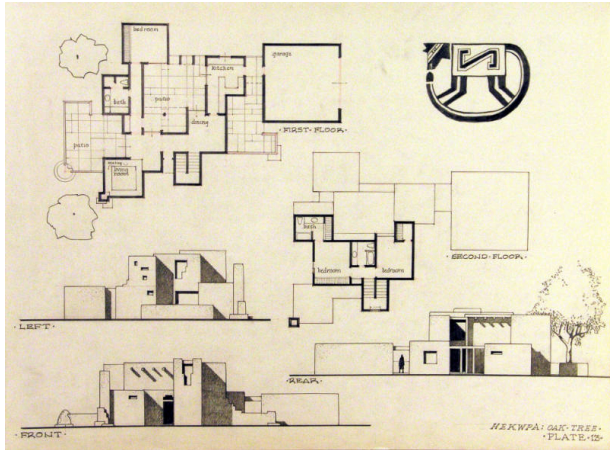


# Basic Detail Report

---



## Hekwpa: Oak Tree, Plate 13

### Date

1965-1967

### Primary Maker

William Lumpkins

### Medium

Graphite on paper

### Description

Architectural drawing of a first and second floor plan and elevations of the left, front and rear of a house. At top right is a stylized figure of a dog like figure with a long tail that forms a half circle.

### Dimensions

Support: 18 x 24 1/8 in. (45.7 x 61.3 cm)