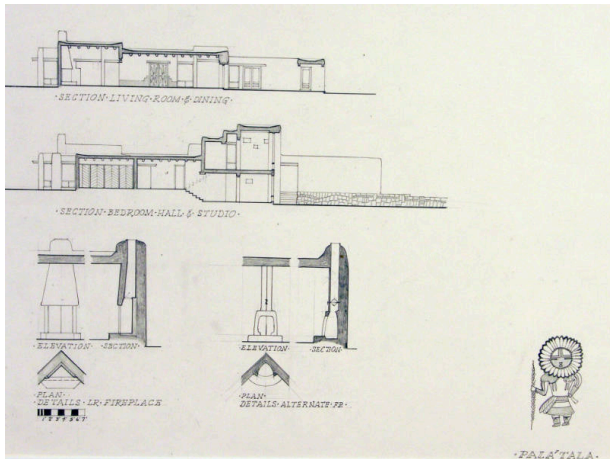


Basic Detail Report



Pala' Tala: Sunrise

Date

1965-1967

Primary Maker

William Lumpkins

Medium

Graphite on paper

Description

Architectural drawing of two sections of a house, elevations and sections of two fireplaces and plan details of two fireplaces. At bottom right is a kachina figure with inscription below.

Dimensions

Support: 18 x 24 1/8 in. (45.7 x 61.3 cm) Mat: 22 x 28 in. (55.9 x 71.1 cm)