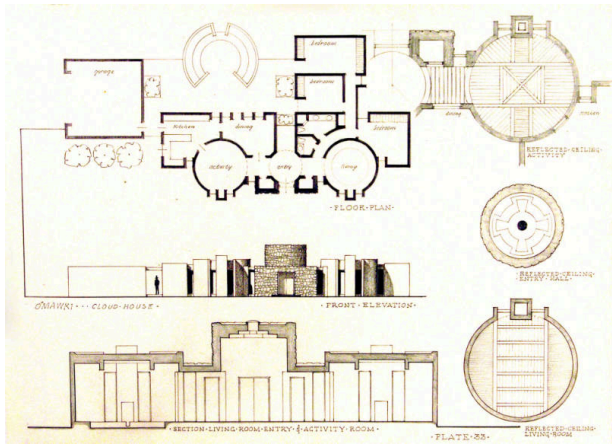


Basic Detail Report



O'mawki: Cloud House, Plate 33

Date

1965-1967

Primary Maker

William Lumpkins

Medium

Graphite on paper

Description

Architectural drawing of a floor plan, front elevation and section of a house. Plan includes three drawings of reflected ceiling plans of the activity, entry hall and living room areas. Overall the use of the circle in all of the plans is of note.

Dimensions

Support: 18 x 24 1/8 in. (45.7 x 61.3 cm)