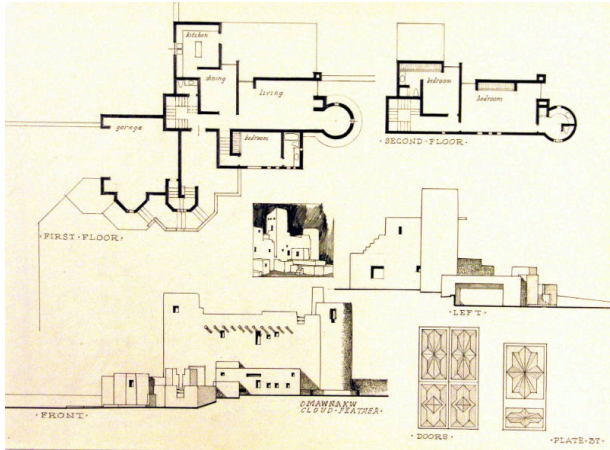


Basic Detail Report



Omawnakw: Cloud Feather

Date

1965-1967

Primary Maker

William Lumpkins

Medium

Graphite on paper

Description

Architectural drawing with a section which includes the stairs, powder room and kitchen and the plan for the third level, stairs and roof deck.

Dimensions

Support: 18 x 24 1/8 in. (45.7 x 61.3 cm) Mat: 22 x 28 in. (55.9 x 71.1 cm)