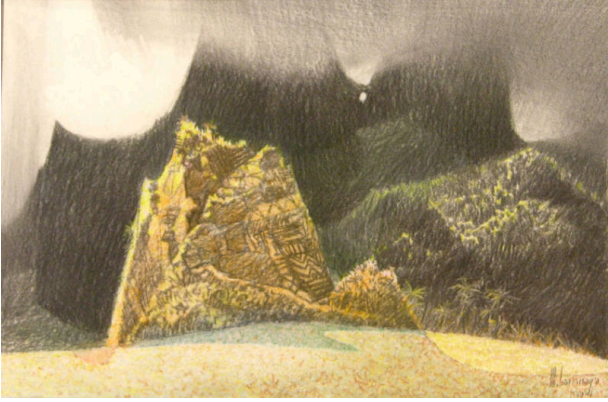


Basic Detail Report



Puka No. 1

Date

n.d.

Primary Maker

Mario Larrinaga

Medium

Crayon, ink, charcoal

Description

Mountain landscape in dark and yellow colors.

Dimensions

Image: 10 1/2 x 16 in. (26.7 x 40.6 cm) Frame: 19 1/4 x 23 1/4 x 1 in. (48.9 x 59.1 x 2.5 cm)