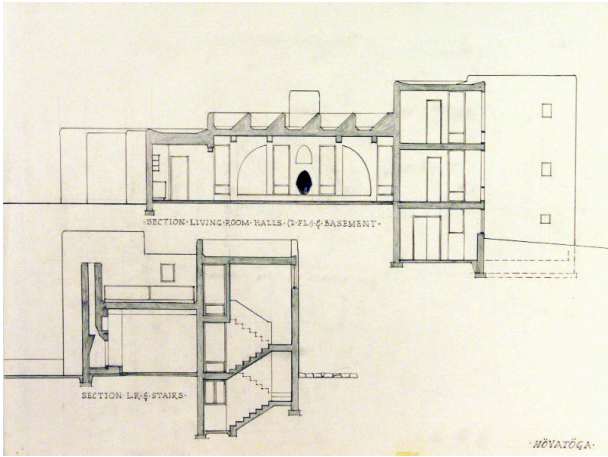


Basic Detail Report



Hovatoga: Cut in the Cliff

Date

1965-1967

Primary Maker

William Lumpkins

Medium

Graphite on paper

Description

Architectural drawing of two sections of a house plan. Top section shows living room, halls and basement. Bottom section shows living room and stairs.

Dimensions

Support: 18 x 24 1/8 in. (45.7 x 61.3 cm)