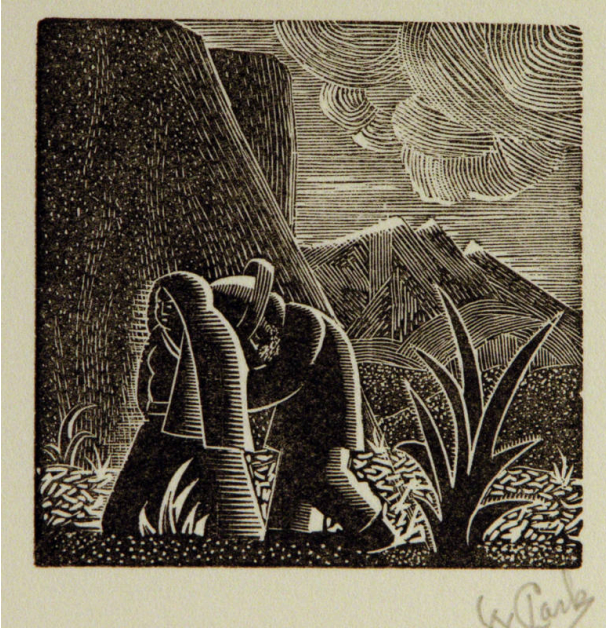


# Basic Detail Report

---



## Untitled (Couple walking in a desert landscape)

### Date

early 20th-late 20th Century

### Primary Maker

Willard F. Clark

### Medium

woodcut

### Description

Couple walking in a desert landscape with cactus, mountains and clouds. The woman is leading the elderly man by the hand. Black ink on cream paper

### Dimensions

Image: 2 1/8 x 2 1/8 in. (5.4 x 5.4 cm) Mat: 12 x 16 in. (30.5 x 40.6 cm)