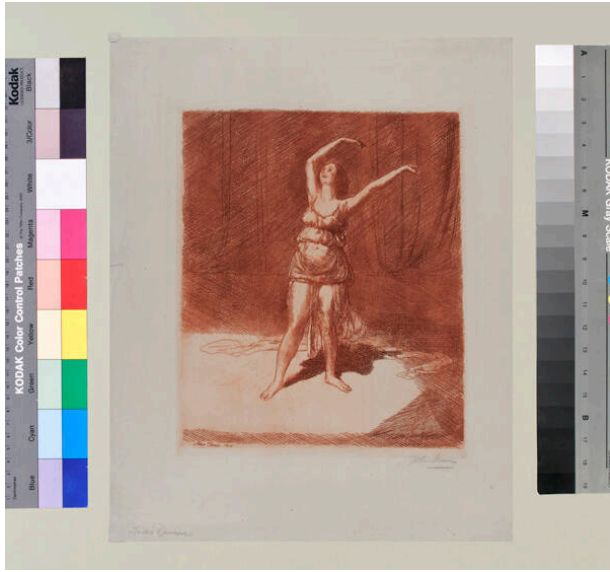


Basic Detail Report



Isadora Duncan

Date

1915

Primary Maker

John Sloan

Medium

etching

Description

Woman standing on stage with her arms stretched out above her head, she wears a flimsy short dress.

Dimensions

Image: 8 1/2 × 7 1/4 in. (21.6 × 18.4 cm) Support: 12 7/8 × 10 15/16 in. (32.7 × 27.8 cm) Mat: 22 × 20 in. (55.9 × 50.8 cm)