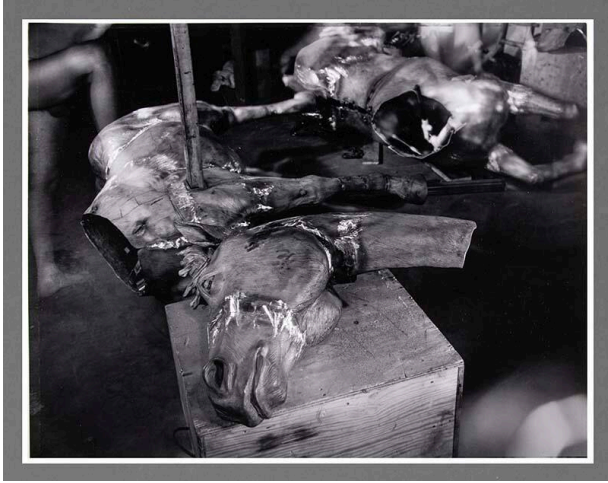


Basic Detail Report



From the Foundry Series (Head of Bronze Horses)

Date

1989

Primary Maker

Siegfried Halus

Medium

Gelatin silver print, selenium toned

Description

Photograph of a cast sculpture form of a horse, nude male figure at top left corner.

Dimensions

Image: 14 × 18 in. (35.6 × 45.7 cm) Support: 16 × 20 in. (40.6 × 50.8 cm)