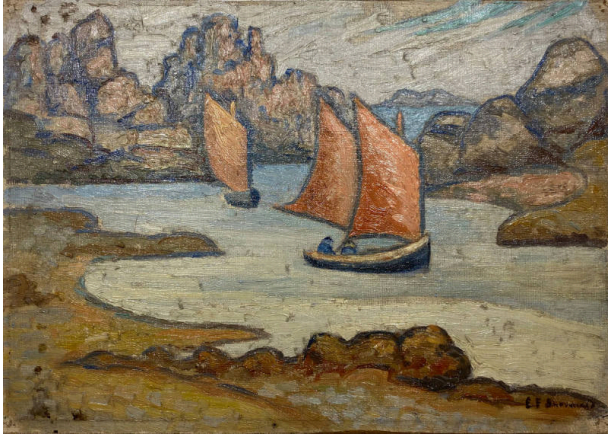


# Basic Detail Report

---



## Ploumenach II, Boats at Ploumenach

### Date

circa 1920

### Primary Maker

Eugenie F. Shonnard

### Medium

oil on canvas

### Description

Landscape of an inlet with two boats. The boats have salmon colored sails; one of the boats has two sails. There are pink and tan rock formations in the upper left corner and large tan and grayish brown hills in the upper right corner. In the foreground there is green and brown beach with a small rock formation.

### Dimensions

Support: 9 7/8 x 13 5/8 in. (25.1 x 34.6 cm)