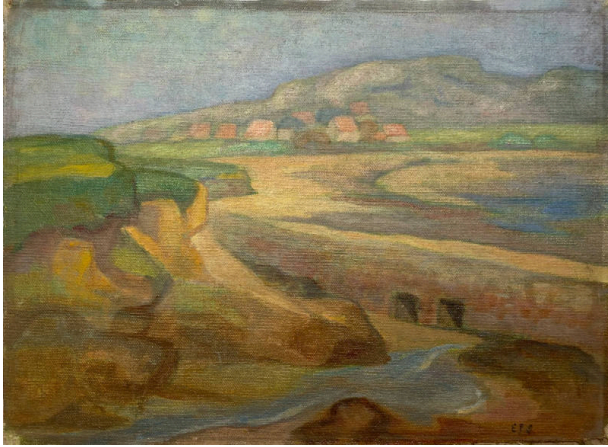


Basic Detail Report



Ploumenach #2

Date

circa 1920

Primary Maker

Eugenie F. Shonnard

Medium

oil on canvas

Description

Landscape of hills and a river. The background has low hills with houses and structures below. In the midground is a beach with low hills to the left. The foreground is a levy with two openings and a water flow. There are rock formations in front. The colors are pastel except for the green low hills to the left.

Dimensions

Support: 10 x 13 1/4 in. (25.4 x 33.7 cm)