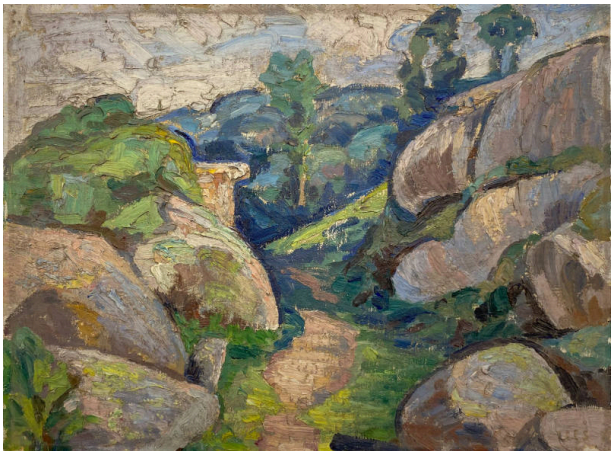


# Basic Detail Report

---



## Ploumenach II

**Date**

circa 1920

**Primary Maker**

Eugenie F. Shonnard

**Medium**

oil on canvas

**Description**

Landscape with gray and purple rock formations on either side of a path in the foreground and blue hills in the background. There is a tree in the center just above the path and a small bush in the lower left corner.

**Dimensions**

Image: 10 × 13 1/2 in. (25.4 × 34.3 cm)